

CHAMOT

Recombinant IL-15, Human, GMP

CM016-100HPG
CM016-1000HPG



CHAMOT

喬默生物技術(上海)有限公司
CHAMOT BIOTECHNOLOGY CO., LTD.

CONTENT

1 产品简介

2 产品组成

3 产品储存

4 产品使用

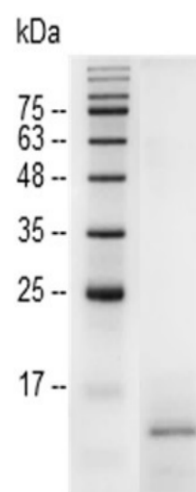
5 产品规范

Recombinant IL-15 (Interleukin-15), Human, GMP

编号:	CM016-100HPG CM016-1000HPG	规格:	100 µg 1 mg
类别:	重组蛋白	应用:	Functional Assay

产品简介

描述: Interleukin-15 (IL-15) is a cytokine with structural similarity to Interleukin-2 (IL-2). Like IL-2, IL-15 binds to and signals through a complex composed of IL-2/IL-15 receptor beta chain (CD122) and the common gamma chain (gamma-C, CD132). IL-15 is secreted by mononuclear phagocytes (and some other cells) following infection by virus(es). This cytokine induces cell proliferation of natural killer cells; cells of the innate immune system whose principal role is to kill virally infected cells.



SDS-PAGE analysis of recombinant IL-15, Human, GMP

来源: *Escherichia coli*.
Animal-free reagent and laboratory.
Manufactured and tested under GMP guideline.

纯度: >97% as determined by SDS-PAGE analysis.

生物学活性: Measure by its ability to induce proliferation in CTLL-2 cells. The ED₅₀ for this effect is < 3 ng/mL. The specific activity of recombinant human IL-15 GMP is > 2 x 10⁶ IU/mg, which is calibrated against the human IL-15 WHO International Standard (NIBSC code: 95/554).

内毒素检测: <0.05 EU per 1 µg of the protein
by the LAL method.

蛋白序列: NWVNVISDLKKIEDLIQSMHIDATLY
TESDVHPCKVTAMKCFLELQVISL
ESGDASIHDTVENLIILANNSLSSNG
NVTESGCKECEEELEEKNIKEFLQSFVH
IVQMFIN TSLE with polyhistidine
tag at the N-terminus.

产品组成

成分: 从含有 NaPi buffer, 0.018% SDS,
pH 7.5溶液中冻干的蛋白质, 无任
何动物源性成分.

产品储存

储存: -20°C冻干粉保存 1 年.
运输: 蓝冰.

产品使用

- 1、开盖前, 建议3000-3500rpm离心5min。
- 2、推荐使用无菌水重悬冻干粉, 溶液浓度不低于500 µg/mL, 并室温静置至少20min以充分溶解。勿涡旋剧烈振荡。
- 3、重悬后的溶液, 2-8无菌保存不超过1周。
- 4、如需长期保存, 推荐使用无菌的含载体蛋白 (如0.1%BSA、10%FBS 或5%HSA) 的溶液进一步稀释 (不低于10ug/mL) 后分装保存, -20至-80无菌保存3到6个月。无血清实验需求时, 可更换为 5%海藻糖溶液作为载体。避免反复冻融。

产品规范

CHAMOT GMP recombinant proteins are manufactured in ISO 13485:2016 and GMP certified facility.
The processes include:

- ★Testing and traceability of raw material
- ★Records of the maintenance and equipment calibration
- ★Personnel training records
- ★Batch-to-batch consistency
- ★Documentation of QA control and process changes
- ★Manufactured and tested under an ISO 13485:2016 certified quality management system
- ★Stability monitor of product shelf-life

WB=Western Blot; IP=Immunoprecipitation; IF=Immunofluorescence; IHC=Immunohistochemistry;
FACS=Fluorescence activated Cell Sorting; FA=Functional Assay

CHAMOT Biotechnology (Shanghai) Co., Ltd.

For Research Use Only. Not for use in diagnostic or therapeutic procedures